



Challenges to the nature protection in Bulgaria

Nada Tosheva
Bulgarian Society for the Protection of Birds

© Svetoslav Spasov

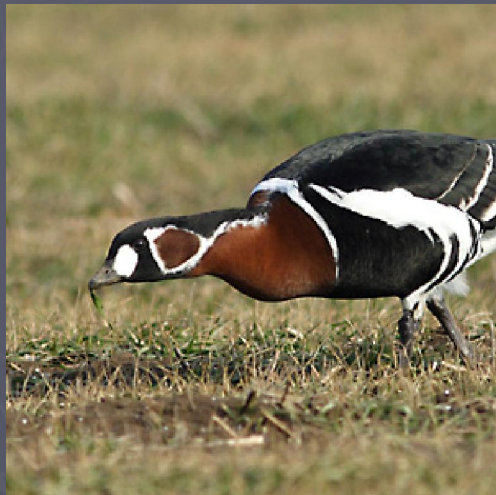
Crossroads for biodiversity in Europe



- ▶ 3 Biogeographic regions (Continental, Alpine, Black Sea)
- ▶ Biota ranges from boreal to Mediterranean and from C European to C Asian species
- ▶ High endemism (8%) and many relict species
- ▶ Climate ranging from alpine to sub-Mediterranean
- ▶ 50% of the country is mountainous (Rila Mt. 2925 m)
- ▶ 30% covered by forests, including 103,000 ha of 'virgin' forests



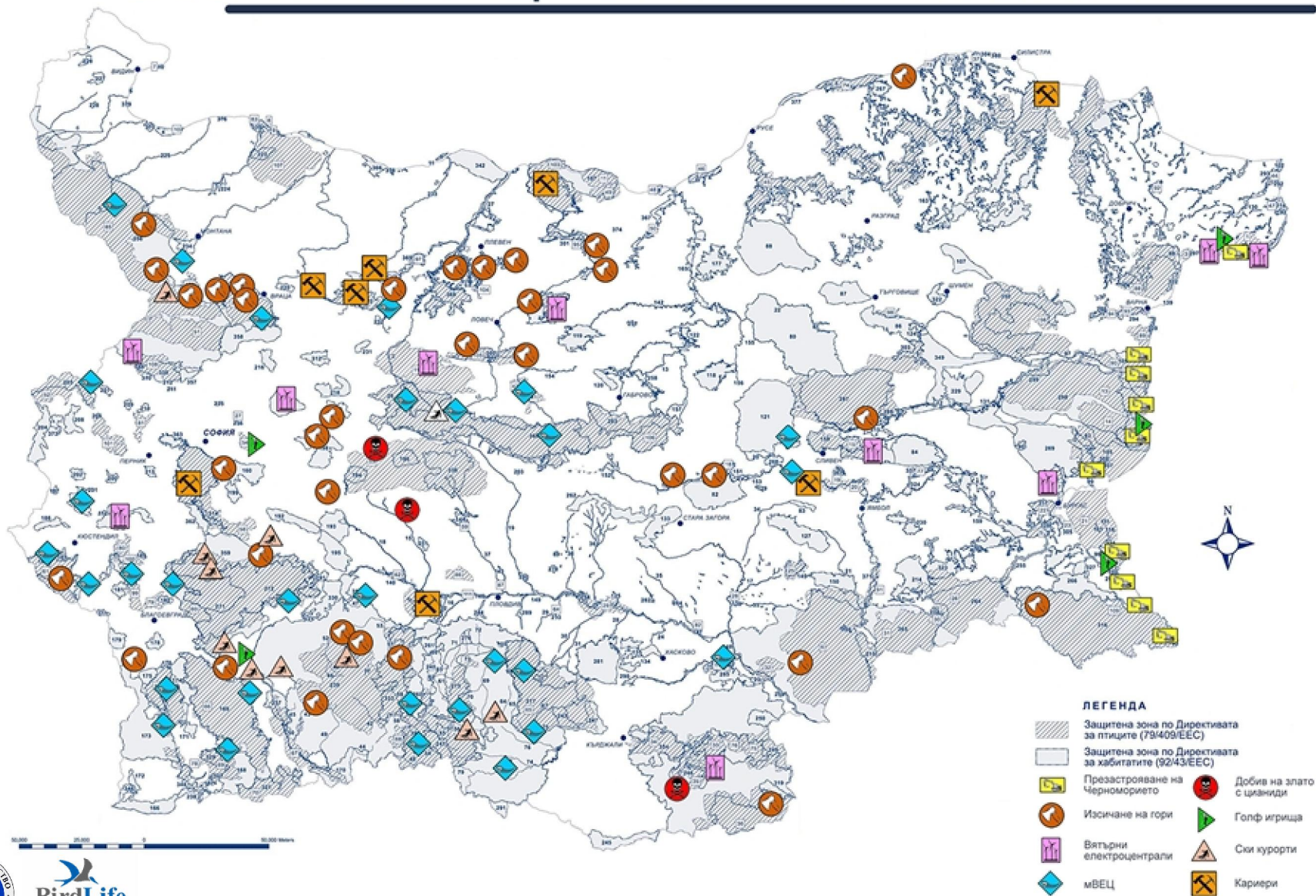
Reach biodiversity



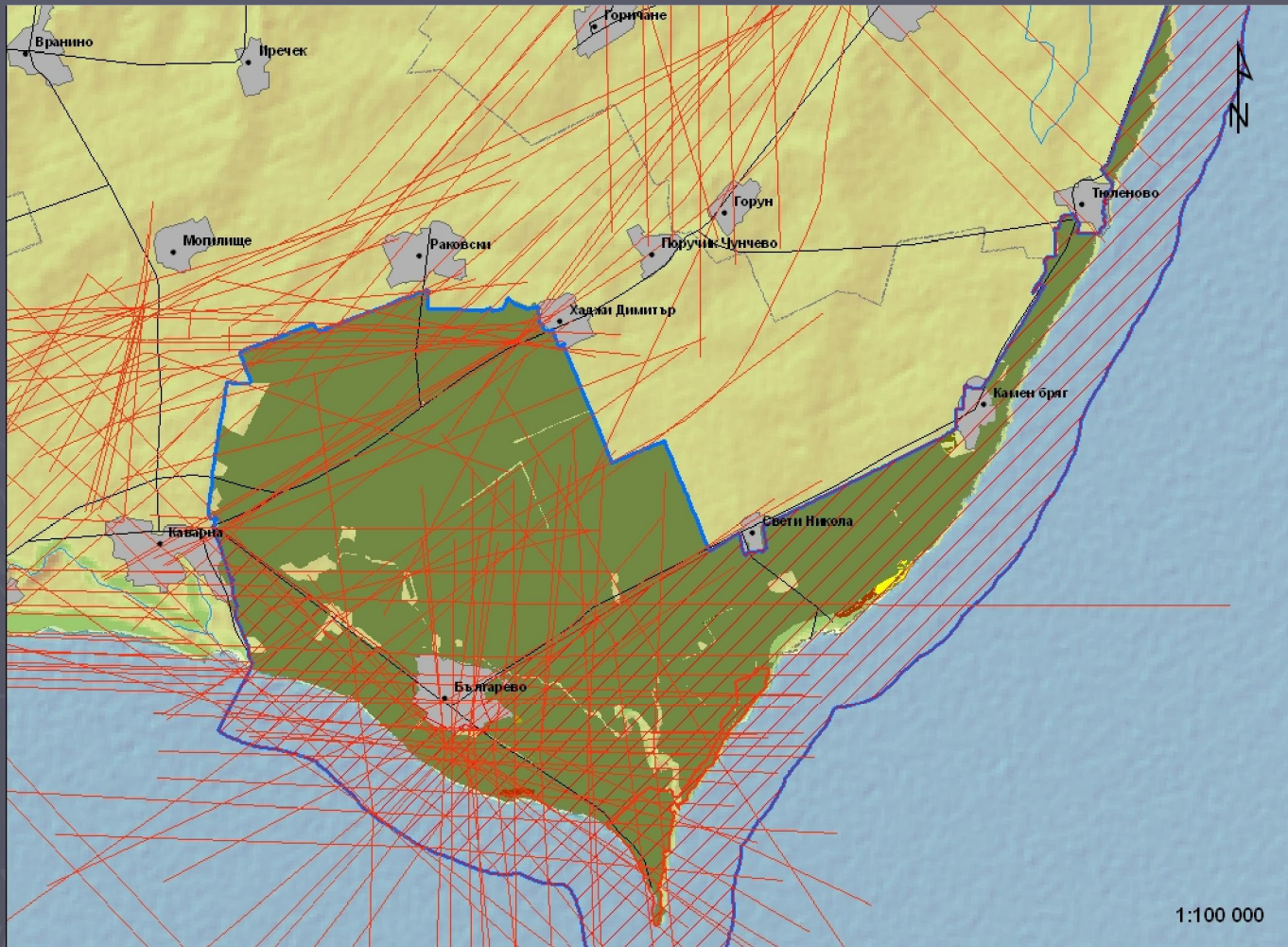
Unfortunately
things are not
always
beautiful....



ЗАПЛАХИТЕ В ЗАЩИТЕНИТЕ ЗОНИ НА БЪЛГАРИЯ



Challenge 1: lack of strategic planning documents

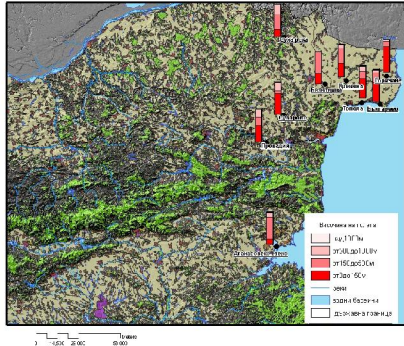


Windfarms along Via Pontica

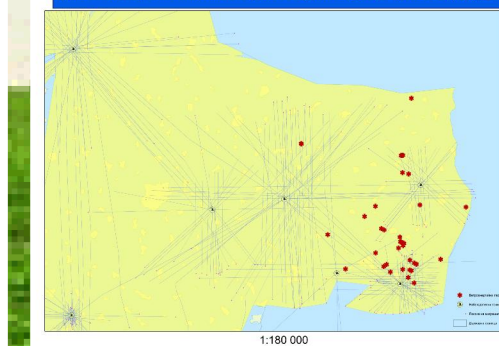
- ▶ No strategic environmental assessment
- ▶ No or poor EIA
- ▶ Sites of international importance threatened



Височина на полета (брой птици / височина)



Карта на инвестициони намерения за строеж на ветрови генератори в района на Добруджа

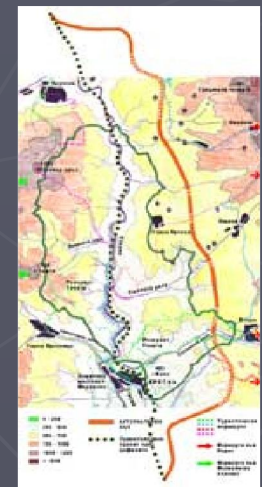


Challenge 2: change of the land purpose use

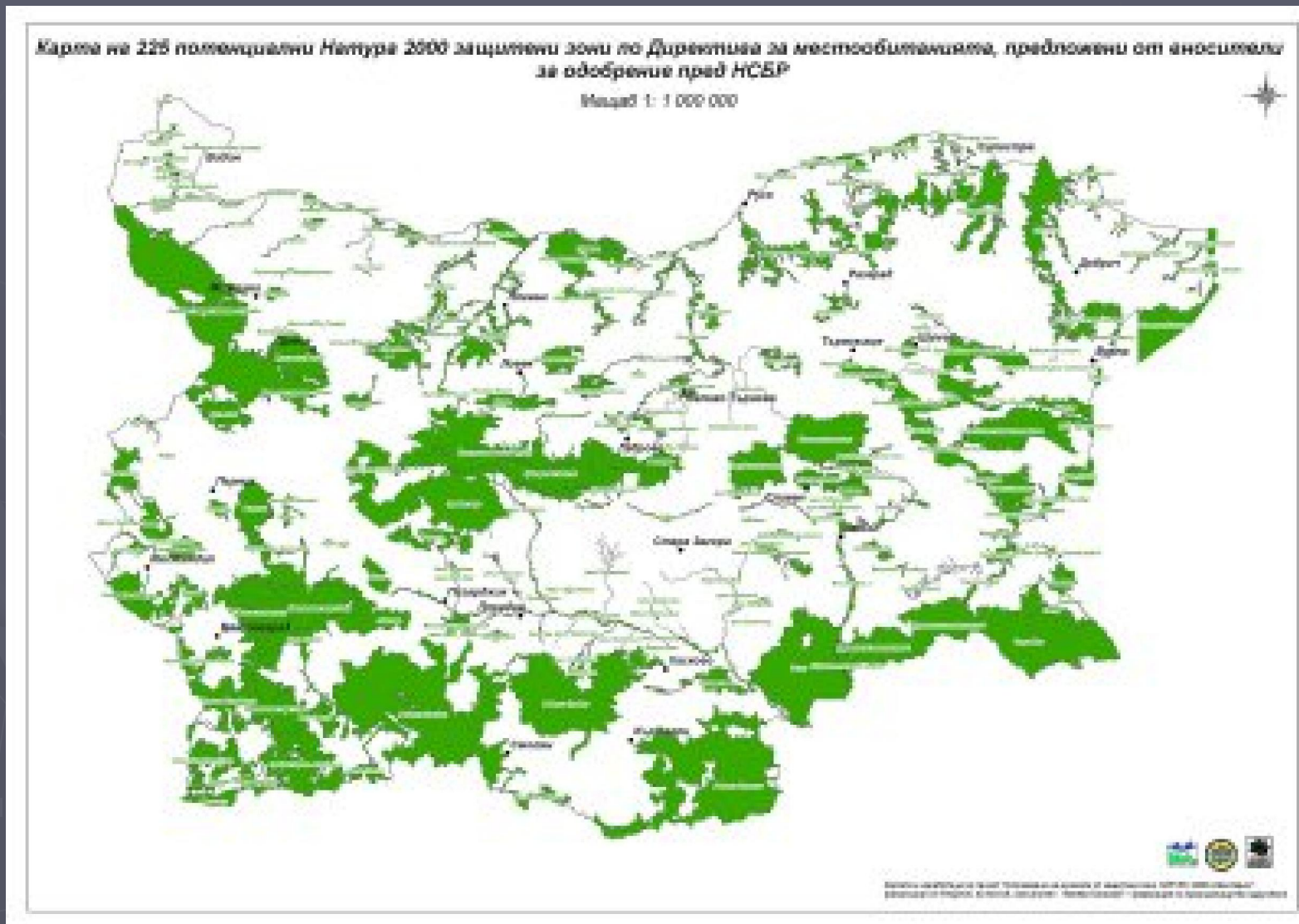


Challenge 3: ensure participation of the civil society

- ▶ Monitoring of the EU funds
- ▶ Management of Protected areas
- ▶ Monitoring of the law enforcement



Challenge 4: management of Natura 2000 sites



Thank you for your attention

